

BBS/BSS BriteCor AC Direct Surface Mount Installation Manual



BBS/BSS BriteCor Surface Installation Manual

NOTES

- WARNING – Risk of fire or electric shock.
- WARNING - It is recommended that installation be performed by a certified electrician.
- All electrical connections must be in compliance with local codes, ordinances or the national electrical code (NEC). Contact your municipal building department to learn about your local codes, permits and/or inspections.
- Do not connect this Luminaire to an electrical system that does not provide means for equipment grounding. Never use a fixture in a two-wire system that is not grounded.
- If dimming functionality is included, use only with Litesheet approved dimmers.
- Do not use excessive force when manipulating cables and wires.
- WARNING – To prevent wiring damage or abrasion, do not pinch wires between surfaces.
- WARNING – Only connect Luminaire to the voltage indicated by the Luminaire label. It is intended for direct connection to this voltage. DO NOT connect to a different or unknown voltage.

CONTENTS OF KIT

- BBS/BSS Luminaire
- Mounting Hardware
- (4) Nylon wallboard anchors
- (4) #8 Screws

TOOLS AND ADDITIONAL PARTS REQUIRED

- Drill
- 3/16" drill bit
- #2 Phillips head screwdriver

Document #: 11-0007	Rev: G	Date: 4/19/2022
---------------------	--------	-----------------

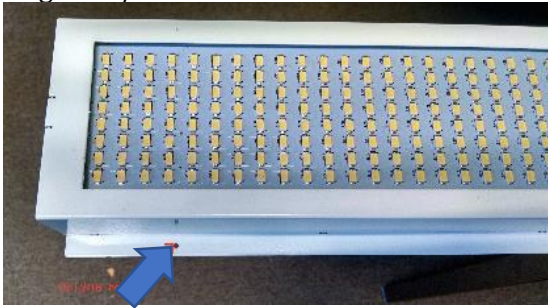
LiteSheet Solutions

Preparation

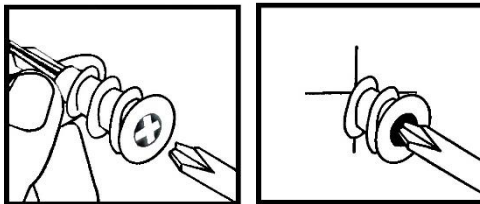
1. Turn off power source.
2. Remove luminaire from packaging.

Installation

1. Drill out (4) pilot holes on BriteCor luminaire flange to 3/16" diameter.



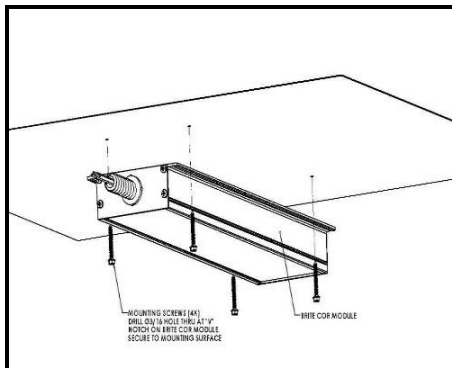
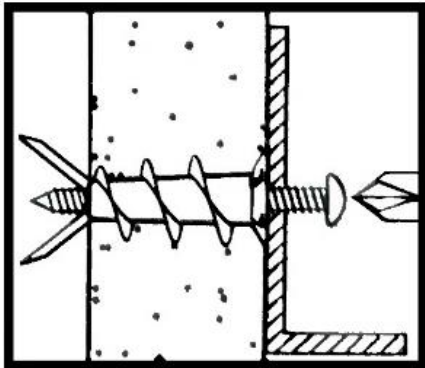
2. While holding the BriteCor luminaire to the desired surface, mark the drilled hole locations on the surface. Remove the BriteCor luminaire and use a screwdriver to install anchors.



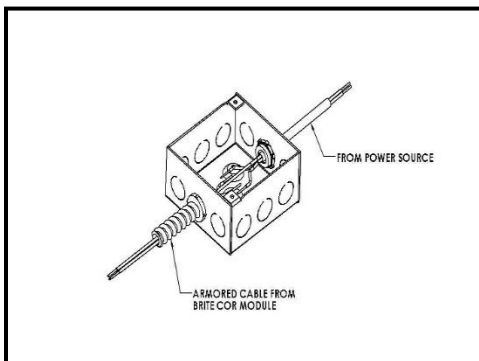
NOTE: For hard wallboard or double board construction, pre-drill 3/16" hole in the mounting surface before inserting anchors. Anchors not needed for mounting to wood.

BBS/BSS BriteCor Surface Installation Manual

3. Hold luminaire to the surface, aligning the pilot holes to the installed anchors. Attach the #8 screws to the anchors.



4. Wire the BriteCor luminaire using NEC approved methods.



5. Provide power to the luminaire.